

## ACCESSORIES

### Test leads/Alligator Clip/K Type Thermocouple



#### T3001

Probe: Length 130mm, Tip  $\Phi$ 2mm  
 Plug:  $\Phi$ 4mm Cross Plug, right angle type  
 Wire: 20AWG, red/black  
 Length: 1000mm  
 Safety Class: EN61010-031, 1000V CATIII/600V CATIV, MAX 10A



#### T3002

Probe: Length 120mm, Tip  $\Phi$ 2mm  
 Plug:  $\Phi$ 4mm Cross Plug, right angle type  
 Wire: 22AWG, red/black  
 Length: 800mm  
 Safety Class: EN61010-031, 1000V CATII, MAX 10A



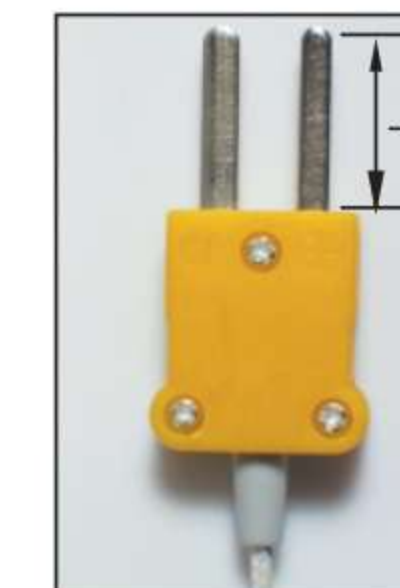
#### T3006

Probe: Length 130mm, Tip  $\Phi$ 4mm Banana  
 Plug:  $\Phi$ 4mm Banana Plug, right angle type  
 Wire: 18AWG, red/black  
 Length: 1200mm  
 Safety Class: EN61010-031, 1000V CATIII/600V CATIV, MAX 10A



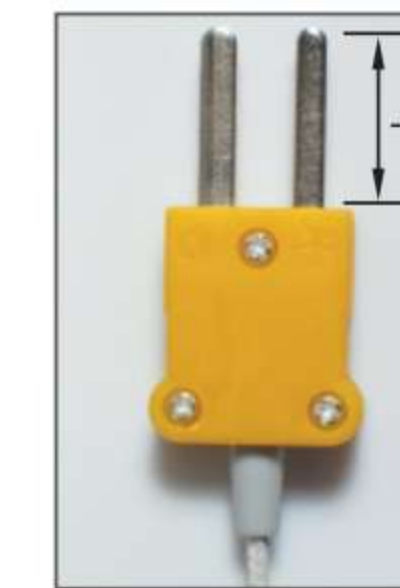
#### A3101

Medium Alligator Clip  
 Plug:  $\Phi$ 4mm Jack  
 Color: Red&Black



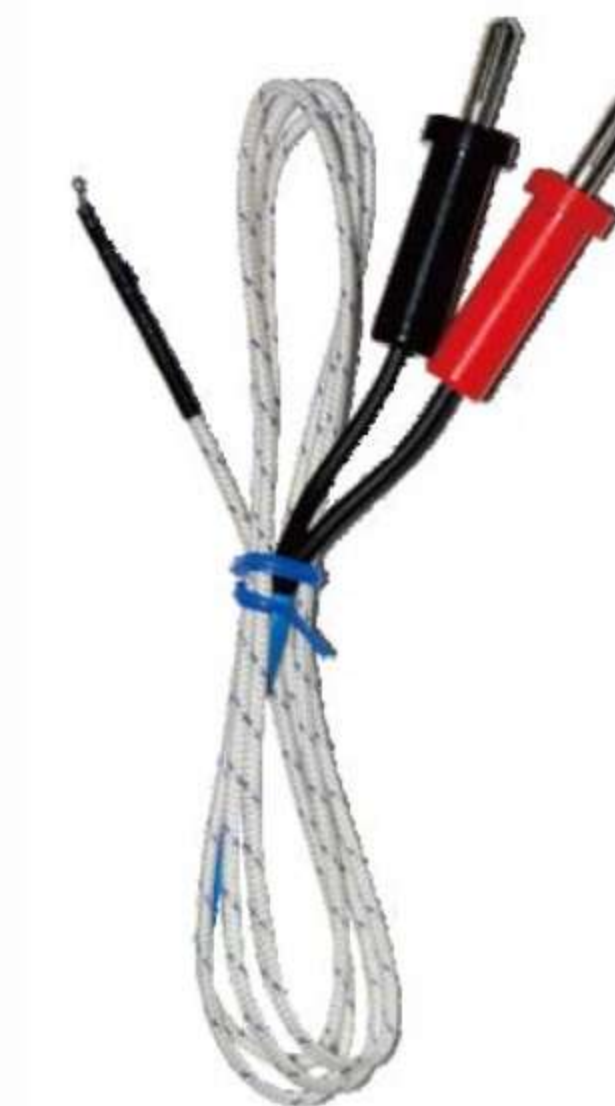
#### P3408A/B

K Type Thermocouple  
 Range:  $-40\sim 260^{\circ}\text{C}$  ( $-40^{\circ}\text{F}\sim 500^{\circ}\text{F}$ )  
 Length: 1000mm  
 Type A: Plug Length 12mm, Type B: Plug Length 16mm



#### P3409A/B

K Type Thermocouple  
 Range:  $-50\sim 600^{\circ}\text{C}$  ( $-58^{\circ}\text{F}\sim 1112^{\circ}\text{F}$ )  
 Length: 1000mm  
 Type A: Plug Length 12mm, Type B: Plug Length 16mm



#### P3412

K Type Thermocouple  
 Range:  $40\sim 260^{\circ}\text{C}$  ( $-40^{\circ}\text{F}\sim 500^{\circ}\text{F}$ )  
 Length: 1000mm



#### A3102

Big Mouth Alligator Clip, MAX 36mm  
 Plug:  $\Phi$ 4mm Jack  
 Color: Red&Black